

Draw Latch

F-1716



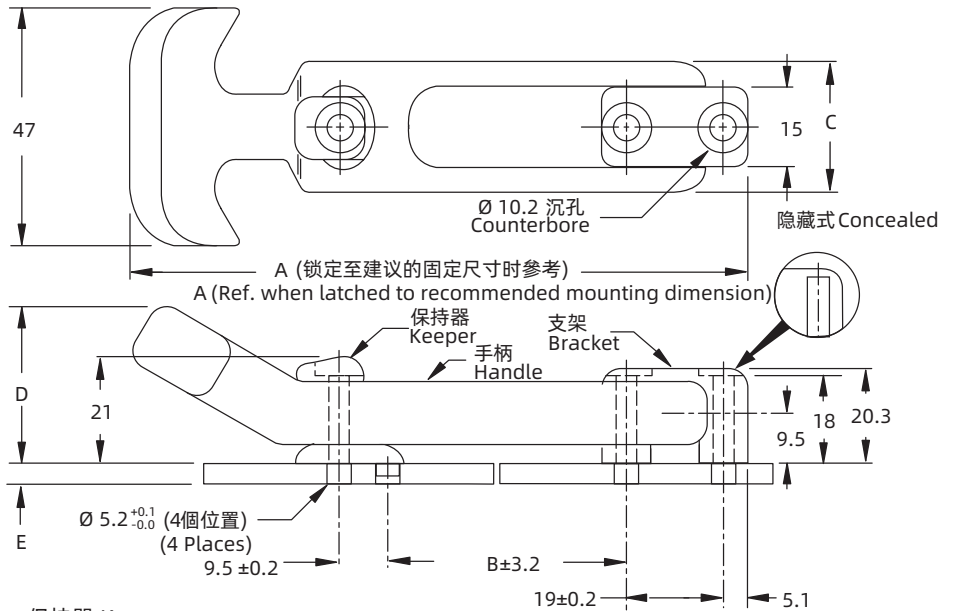
保持器 Keeper



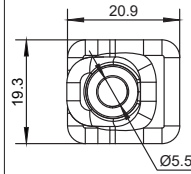
1715-01



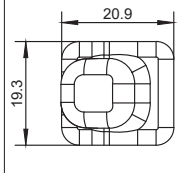
1715-02



保持器 Keeper

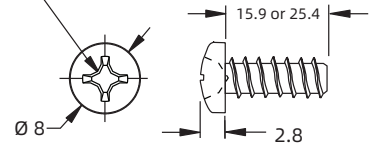


1715-01



1715-02

螺纹外形螺钉 二号十字头型
Thread forming screw
No. 2 Phillips Recess



如需获得产品3D模型图，请联系 WWW.FORND.COM

1. Material and surface treatment:
Main body: Thermoplastic synthetic rubber and nylon with glass fiber, black
Screw: stainless steel, passivated

1. 材质及表面处理:
主体: 热塑合成橡胶和尼龙加玻纤, 黑色
螺钉: 不锈钢, 钝化

尺寸 Size	零件号 Part Number			安装方法 Installation Method	尺寸				
	门锁 Latch	保持器 Keeper	螺钉 Screws		E	A	B	C	D
小型 Small	F-1716-530	F-1716-537	~	前面 Front	~	112	41	25.4	31
	F-1716-540	F-1716-547	1716-548-3	隐藏式 (螺纹外形) Concealed (thread forming)	上至 8.0 up to 8.0				
			1716-558-3	隐藏式 (螺纹外形) Concealed (thread forming)	8.1 - 17.5				
中型 Medium	F-1716-630	F-1716-537	~	前面 Front	~	167	72	32	29
	F-1716-640	F-1716-547	1716-548-3	隐藏式 (螺纹外形) Concealed (thread forming)	上至 8.0 up to 8.0				
			1716-558-3	隐藏式 (螺纹外形) Concealed (thread forming)	8.1 - 17.5				
大型 Large	F-1716-730	F-1716-537	~	前面 Front	~	221	117	32	29
	F-1716-740	F-1716-547	1716-548-3	隐藏式 (螺纹外形) Concealed (thread forming)	上至 8.0 up to 8.0				
			1716-558-3	隐藏式 (螺纹外形) Concealed (thread forming)	8.1 - 17.5				